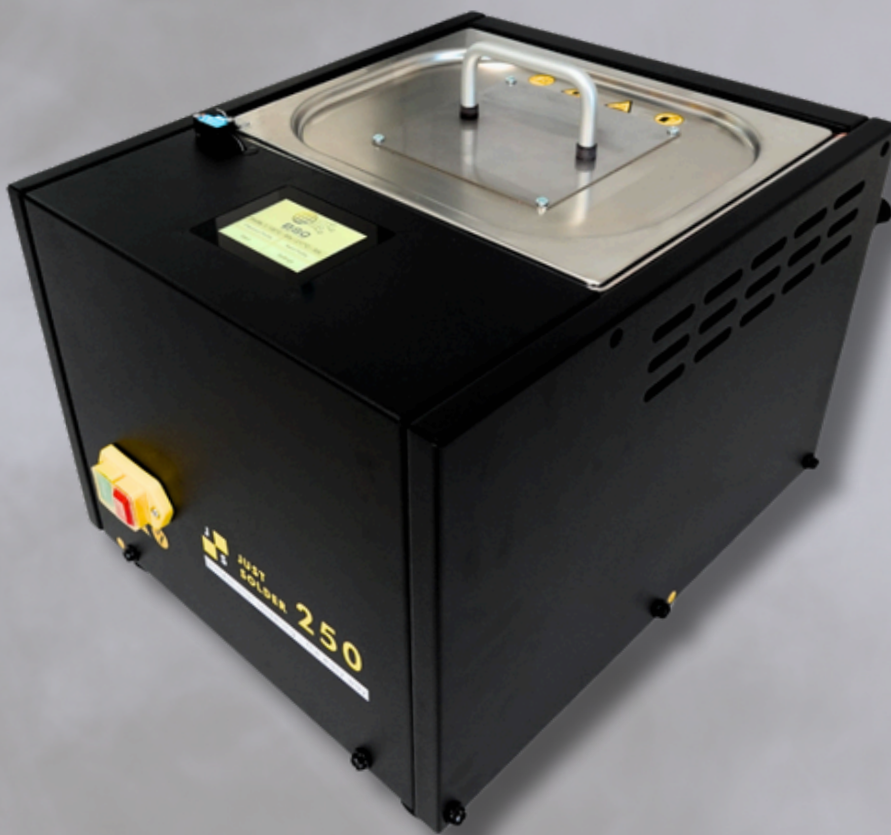
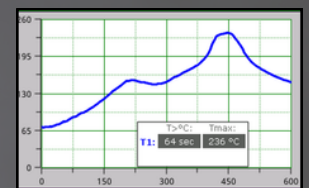


professional soldering - the easy way



Made in Dortmund

Production and support person in Dortmund



Wi-Fi output

Output of soldering curves and settings via Wi-Fi direct connection



User friendly

Intuitive operation via a 4.7" touch HMI panel

Beginners and professionals

Plug'n'solder or individually customize and adjust soldering programs

Efficient & low-stress

- 0.13 kWh per cycle
- 230 °C lead free soldering
- Oxygen free soldering

Perfect for prototyping & repair

Solder all circuit boards (rigid, rigid-flex, flex, aluminum, etc.) and desolder components

Easy to install

- 230 V connection
- Integrated air cooling

Simple.
Vapor phase soldering.



Type	Specification / Data
Dimensions:	480 x 390 x 370 mm (L x W x H)
Weight:	12 kg
Recommended free space:	Left / right / behind each 300 mm
Power connection:	208-240 VAC, 50/60 Hz (Power quality according to EN50160)
Recommended Fuse:	10 A
Electrical Power, max.:	1200 W
Power consumption per cycle:	Approx. 0.13 kWh
Connection cable:	CEE 7/4 Schuko-type plug 2.5 m
Noise level:	<70 dB
Max. workpiece size:	250 x 140 x 100 mm or 235 x 160 x 100 mm
Max. workpiece weight:	3 kg
Processtemperatur:	165 - 240° C (depending on GALDEN TYPE)
Galden filling volume:	0.5 - 0.6 kg
Cooling:	Air-cooled
Display:	4.7" Touch HMI
Datainterface:	Wi-Fi direct connection